

F

104

.B7

B7

1898

Please
handle this volume
with care.

The University of Connecticut

974.69/R764g

UNIVERSITY OF CONNECTICUT
LIBRARY
365 FAIRFAX AVENUE
STORRS, CONNECTICUT 06269
TEL: (860) 405-3200
WWW.UCONN.EDU

GLIMPSSES

OF



BRIDGEPORT, CONN.

Introduction by Salmon Goodsell, under the authority of the

BOARD OF TRADE.



COPYRIGHTED BY

JOHN H. KANE AND FRANK A. WOOD, PUBLISHERS.

1898.

PRESS OF THE MARIGOLD PRINTING CO.,
BRIDGEPORT, CONN.

✧ Preface. ✧

IN presenting this volume of "GLIMSES OF BRIDGEPORT" to the public, the compilers and publishers trust that the work will represent the field which its title page indicates and thereby prove a timely and useful manual not only to our own townspeople but to our neighbors far and near, showing Bridgeport's progressiveness and the enterprise of its people and the growth of the numerous industries mentioned. In the selection of portraits of prominent people as well as the numerous illustrations of the public buildings, churches, school houses, parks, etc., together with the various and extensive manufactories, the publishers have endeavored to make the work truly representative.

THE PUBLISHERS.

✧ Introduction. ✧

AT a regular meeting of the Bridgeport Board of Trade held December 13, 1897, Zalmon Goodsell was authorized by a unanimous vote of the members present to prepare the introductory article for this publication: "GLIMPSSES OF BRIDGEPORT."

The Board of Trade of Bridgeport, by authority of which this book is issued, was organized in 1875 and incorporated in 1876. The officers and members of the Board freely extend every courtesy to those seeking information with a view of removing their present industries or of establishing new plants.

The primary cause of Bridgeport's steady growth in wealth and population is its excellent location on Long Island Sound, with four safe and roomy harbors affording natural and unexcelled advantages for large manufacturing concerns desiring ample waterways for transportation. Quick communication is secured through day and night steamers plying daily to and from New York and Long Island.

Its railroad facilities surpass those of any other city in New England for convenience in shipping and receiving freight at the lowest through rates to and from all points in the country. In addition the city is an important port of entry.

The tax rate is conservative, labor reliable, diligent and available for every line of trade, and all classes of labor are content to reside here. The homes of the working classes are attractive and price of rents are moderate, health statistics show a very low death rate because adequate sewerage and strict compliance with modern sanitary laws are enforced; every kind of recreation is easily obtained. No unreasonable laws are enforced to oppress the workingman or harrass capital. There are societies and churches pertaining to every nationality.

The water supply of the city is unlimited and of unusual purity. The latter fact is best attested by the condition of the boilers in many of the large factories, some of which have been in use for from twenty-five to thirty years, while many have been in service for

over twenty years, without deterioration. The expense of repairs has been very small, scale and incrustation being hardly perceptible. The city is fortunate in being provided with gas and electricity for illuminating, fuel and power purposes at unusually low rates and an extensive electric railway system of about sixty miles, covering the principal thoroughfares of the city and connecting with its suburban towns.

The large quantity of goods produced in Bridgeport factories has made her name famous and advertised her manufactured products throughout the world, till now their value and immense variety have caused the city to be recognized as the leading manufacturing center of New England.

Bridgeport can accommodate an unlimited growth of population through her natural advantages of location and surroundings. It has six public parks renowned for their beauty, its good roads are famous throughout the State and its suburban drives are not only the delight of its citizens but the admiration of all visitors to the City. Seaside Park has a public half mile trotting course for speeding purposes with a boulevard and sea wall drive four miles in length, admitted to be the finest on the Atlantic coast. These and many other good reasons have induced a large number to come and reside here, who delight in good horses, recreation, driving, cycling and boating.

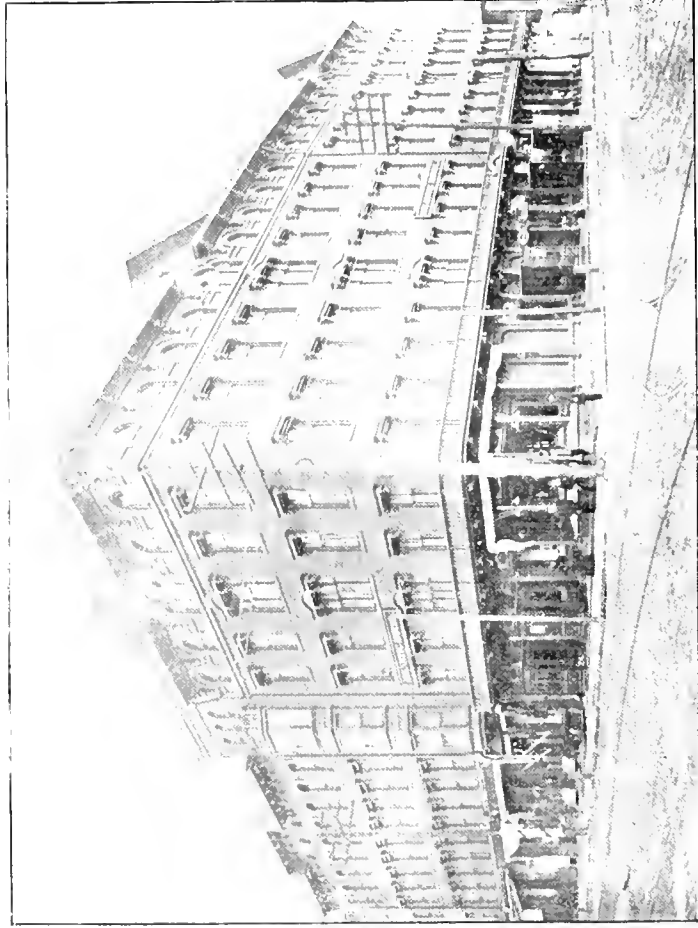
The city's growth has been permanent in population and wealth; the older manufacturing concerns have regularly enlarged their plants every few years and new industries are continually seeking Bridgeport as a location, providing work for all comers besides supplying good positions for our natural increase in population. Many of these firms locate in Bridgeport, believing, after a thorough investigation, that more natural inducements are offered here for economy of manufacturing in the long run than can be found in other places where a large bonus is offered to attract them.

Booms have not been projected to advance real estate values but they have shown a healthy increase without any setback for a number of decades.

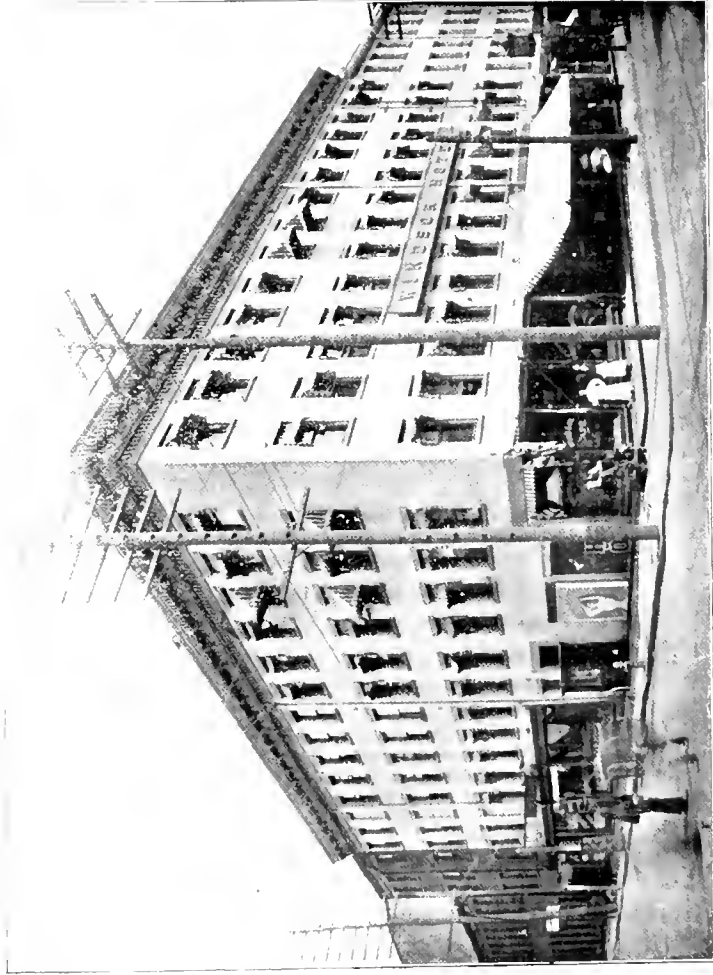
Bridgeport is a city of beautiful drives, of attractive homes, of healthful surroundings and suburbs. The illustrations in this volume give just a glimpse of its manifold natural beauties and if they draw to the Park City the attention of those seeking an ideal location for manufacturing or residential purposes they will have achieved their purpose. Any further information can easily be obtained by addressing the President or Secretary of the Bridgeport Board of Trade, Bridgeport, Conn.



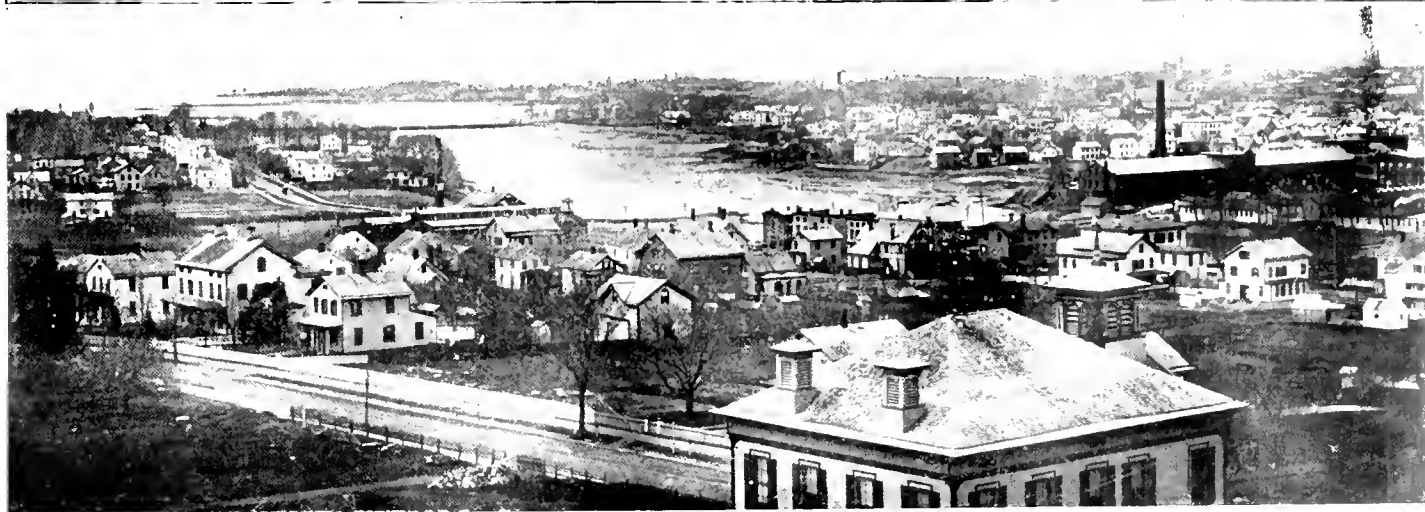
No. 5 ENGINE HOUSE.
Headquarters Bridgeport Fire Department.



ATLANTIC HOTEL.



WINDSOR HOTEL.



NORTH AND SOUTH VIEWS FROM TOWER OF BRIDGEPORT HOSPITAL.



FRED C. MELLINS, City Clerk.



HON. THOMAS P. TAYLOR, Mayor.



PHILIP L. HOLZER, Fire Commissioner.



ROBERT WEBER, Town Clerk.



JAMES H. McELROY, Tax Collector.



BARNUM INSTITUTE OF SCIENCE AND HISTORY.

Donated to the Bridgeport Scientific Society and Fairfield County Historical Society by P. T. Barnum.



WALTER GODDARD.



CAPT. JOHN McNEIL, Harbor Master.



E. D. SHEEDY, M. D.



GEORGE COMSTOCK.



C. M. BILTZ, Charity Commissioner.

✧ Statistics. ✧

BRIDGEPORT has a population of 75,000. It is but one hour and fifteen minutes from New York, via N. Y., N. H. & H. R. R., and three and a half hours via Bridgeport Steamboat Co.'s steamers. In mode of access it has thirty passenger trains to and from New York City, and twelve to points on the Naugatuck and Berkshire Divisions, all equipped with the most modern coaches, and passenger service unequalled in the United States. It has an area of 13.40 square miles, 149 miles of good streets—73 miles of which are macadamized. It has two Hospitals, a State Armory, a Post-Office and Custom House building costing \$125,000 and an appropriation of \$100,000 additional has been secured for enlargement of the same, a County Court House, twenty-nine Public Schools, a High school, a Training school, seven Private and Parochial schools, forty Churches, six Daily Papers, six Weekly Papers, one of the largest Public Libraries in the State, containing over 34,000 volumes, circulation annually, 145,000. Its Y. M. C. A., Historical and Scientific Society buildings would be a credit to any city.

It has eleven miles of water front dredged and available for dock purposes. A second lighthouse is now finished giving double security to navigation. The Harbor has two large break-waters so placed as to make a harbor of refuge which is used by thousands of vessels during the year. The tracks of the N. Y., N. H. & H. R. R. through the City are being elevated at a cost, including the new passenger stations, of \$4,000,000. Bridgeport, according to the United States census reported in 1890, has one hundred and ninety-six per cent more manufacturing establishments than in 1880. During the same period the capital invested in its industries increased ninety-five per cent; the value of its manufactured products one hundred and seven per cent; its population seventy-six per cent, and the assessed valuation of the property eighty-seven per cent. It was the first city in the United States to revolve its drawbridges by electricity. It has the only grain elevator between New York and Boston. Weather Bureau Signals are daily displayed at Seaside Park for the benefit of coastwise shipping. Two large guns have recently been erected by the government near the harbor for the purpose of defense. The manufacturing establishments number four hundred and fifty-one; different branches represented, four hundred and twelve; corporations engaged in manufacturing, four hundred and ten. It is the only City in the State having two large water fronts, both of which are being improved by the government. Every grade of machine work from the heaviest to the lightest is done here and in no city can be found so many expert mechanics. The value of domestic commerce is more than \$100,000,000 per annum, foreign commerce—imports, \$250,000 annually. Average duties on same collected at local Custom House, \$100,000 per annum. Assessed valuation of property, \$58,900,000. Value of municipal property, \$2,000,000. Five National Banks with average deposits of over \$5,000,000. Five Savings Banks with total deposits of about \$12,000,000. Four private banks, two banks with State charters. The waterworks of the Bridgeport Hydraulic Co. have storage reservoirs with a capacity of 2,200,000,000 gallons; daily capacity of reservoir, 20,000,000 gallons; average daily consumption, 16,000,000 gallons.

OFFICERS OF THE BOARD OF TRADE, 1898.



JAMES STAPLES, Treasurer,



N. H. HEFT, President,



WALLACE A. SMITH, Secretary.



BARNUM STATUE.
Seaside Park.



THE LATE HON. P. T. BARNUM—
Bridgeport's Benefactor.



BERGH FOUNTAIN.
Seaside Park.



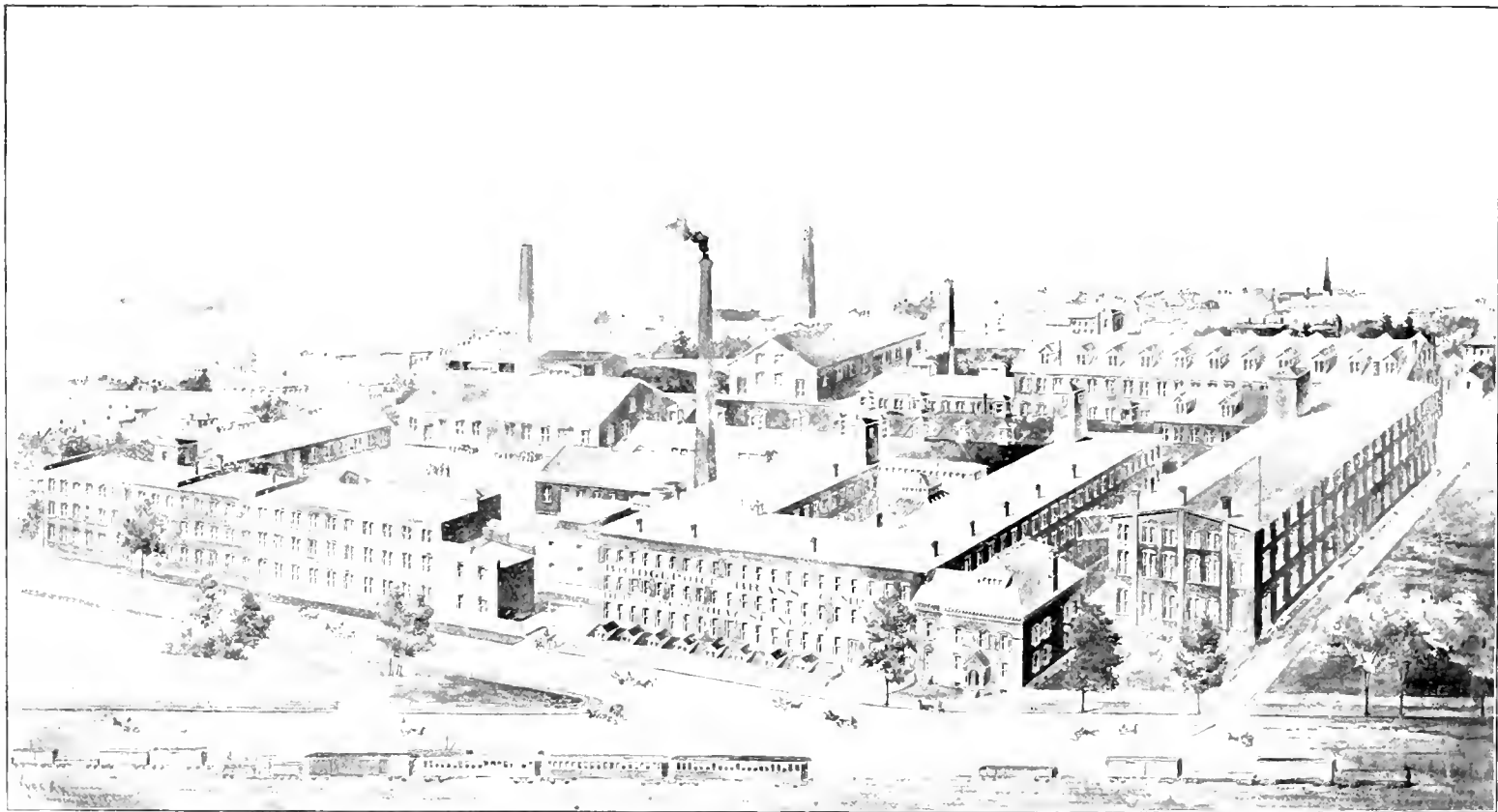
JAMES STAPLES & Co.'s BANKING HOUSE, State Street,



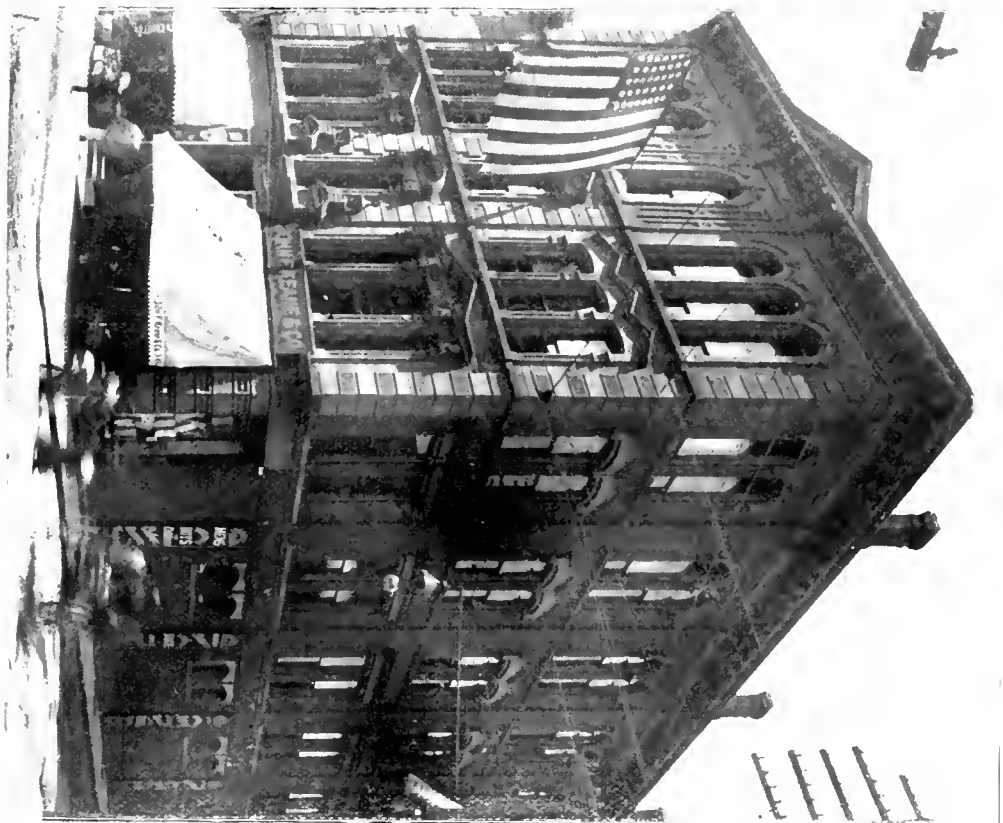
HON. W. H. MARIGOLD, Postmaster.



POST OFFICE AND CUSTOM HOUSE.



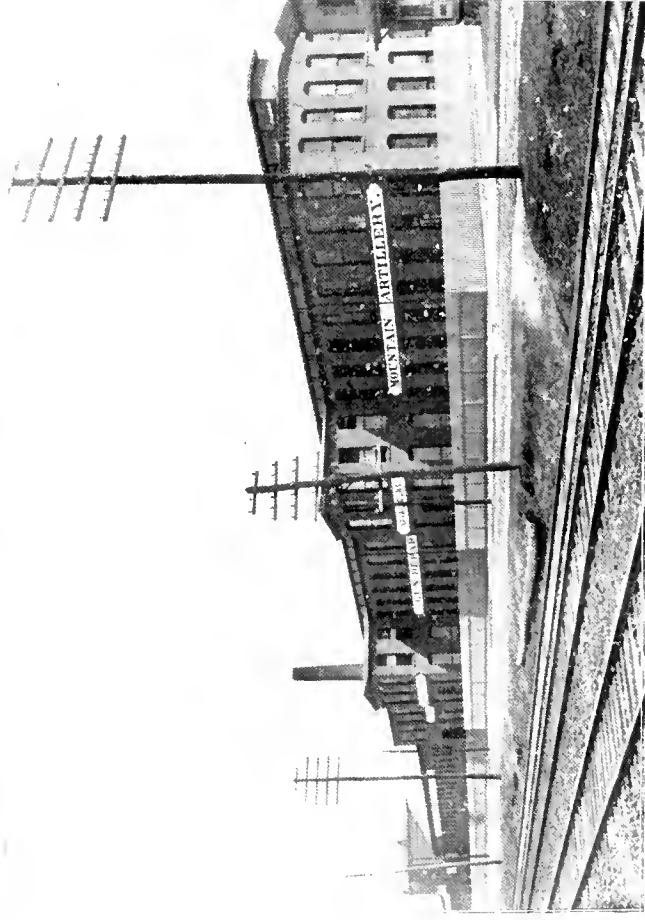
BRIDGEPORT BRASS CO.'S WORKS.



BRIDGEPORT PUBLIC LIBRARY.



UNION METALLIC CARTRIDGE CO.'S WORKS.



AMERICAN ORDNANCE CO.'S WORKS.



Y. M. C. A. BUILDING.



WHEELER & WILSON MFG. CO.'S WORKS.



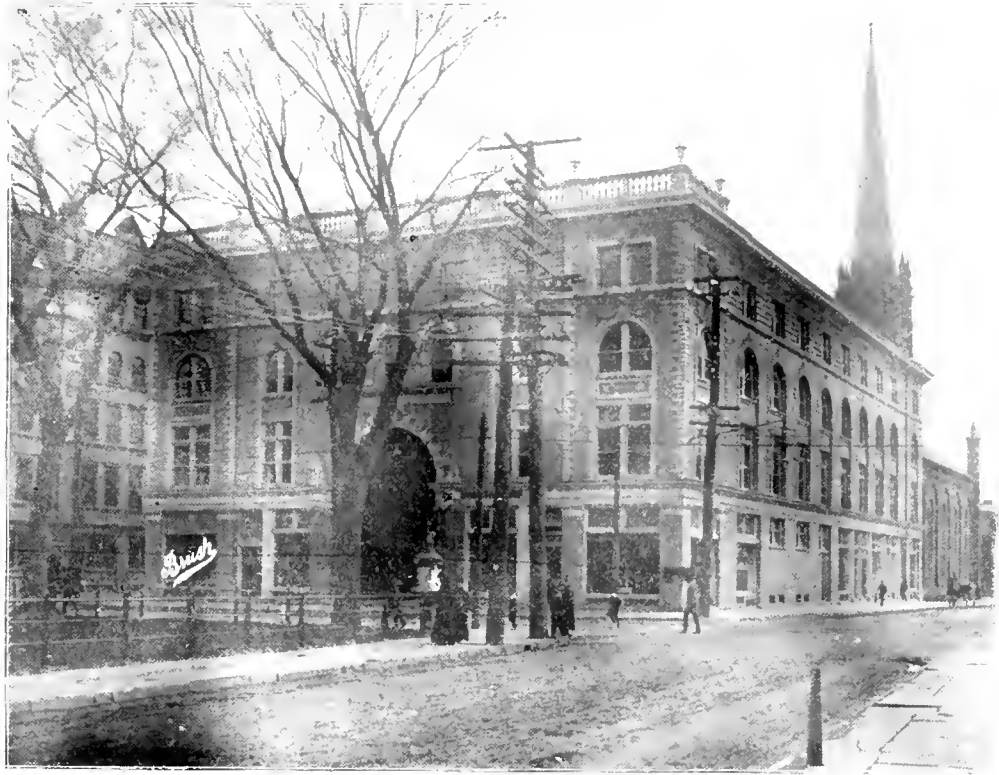
BARNUM WINTER QUARTERS



4TH REGIMENT ARMORY.



EATON, COLE & BURNHAM MFG. CO.'S WORKS.



SEELEY BUILDING.



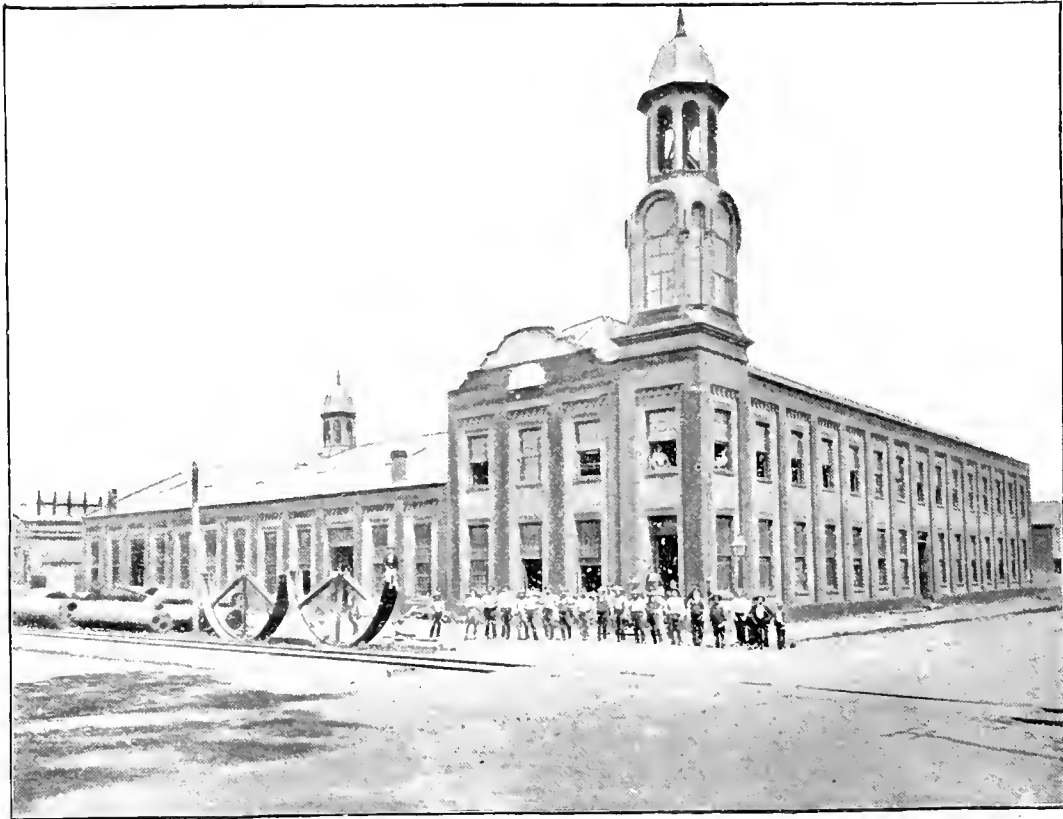
T. P. TAYLOR'S FACTORY.



COMMODORE C. H. MORRIS.



PARK CITY YACHT CLUB.



PACIFIC IRON WORKS.



MASONIC TEMPLE.



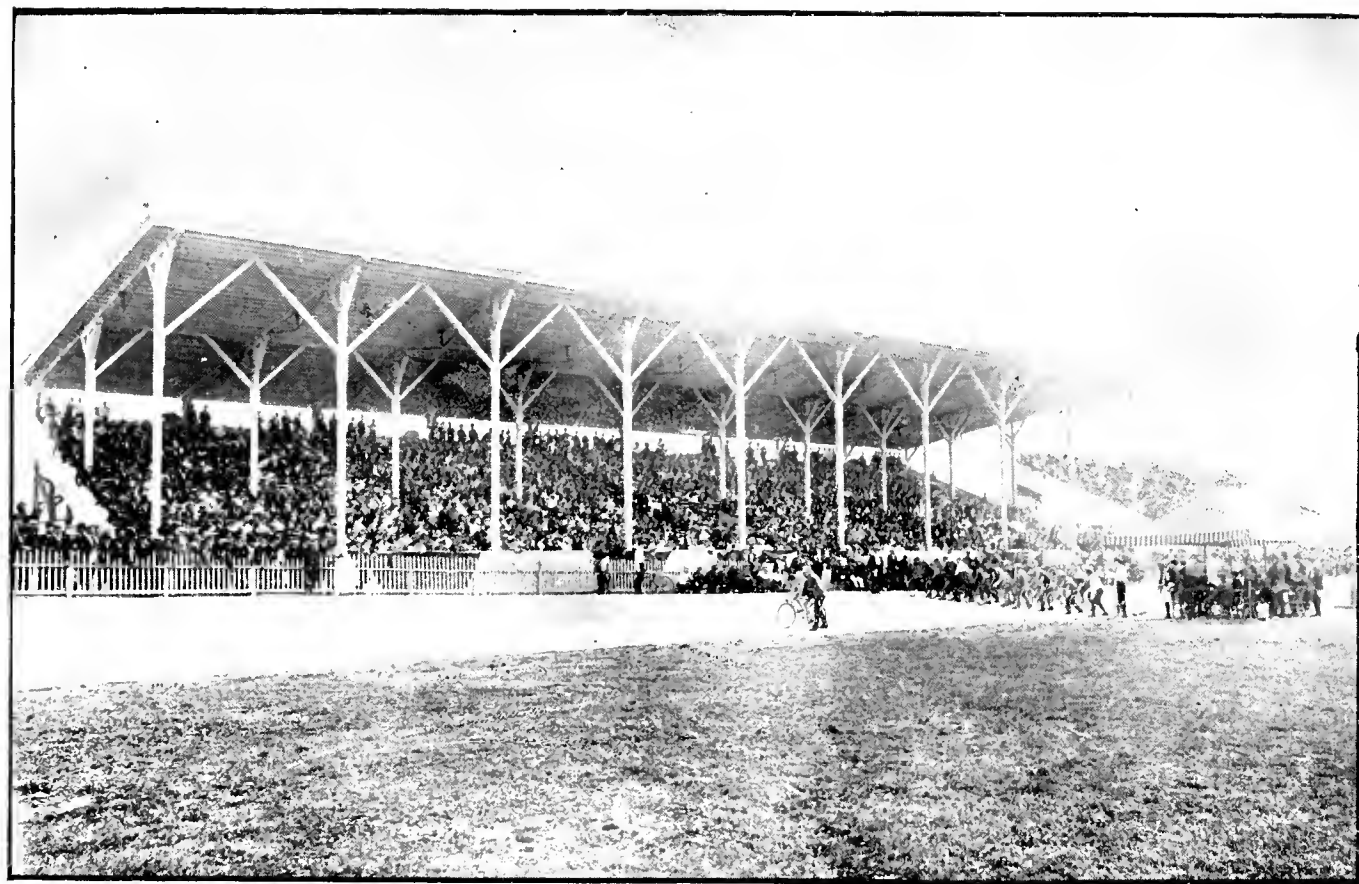
RESIDENCE OF COL. N. H. HEFT,



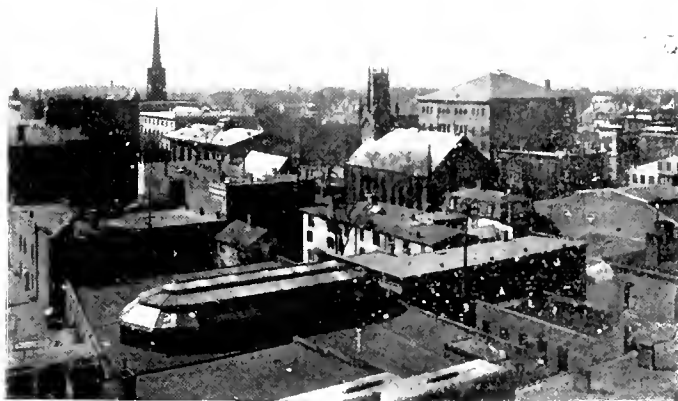
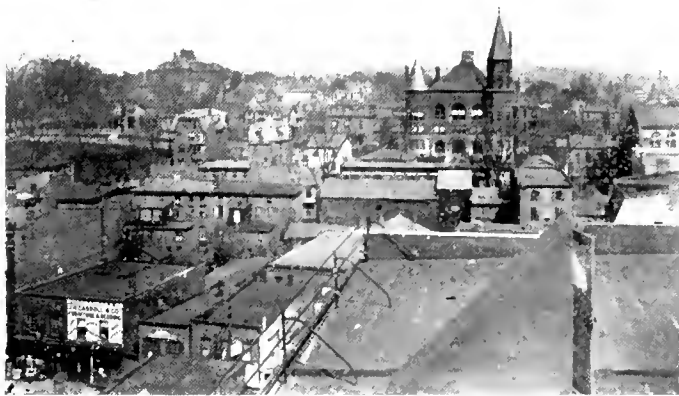
SOLDIER'S MONUMENT.



HOWE STATUE.



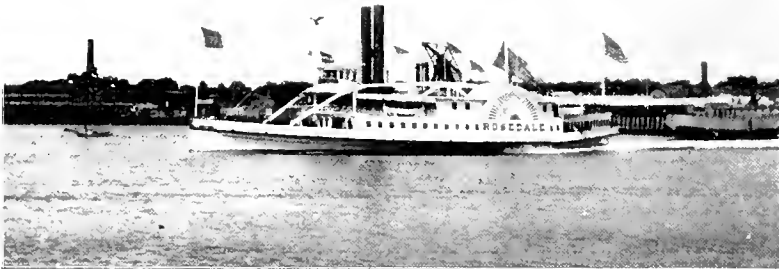
PLEASURE BEACH RACE TRACK.



FOUR CITY VIEWS.



FRANK H. CONNELLEY, Supt.



BRIDGEPORT STEAMBOAT COMPANY.



BRIDGEPORT ORPHAN ASYLM.



BOYS' CLUB.



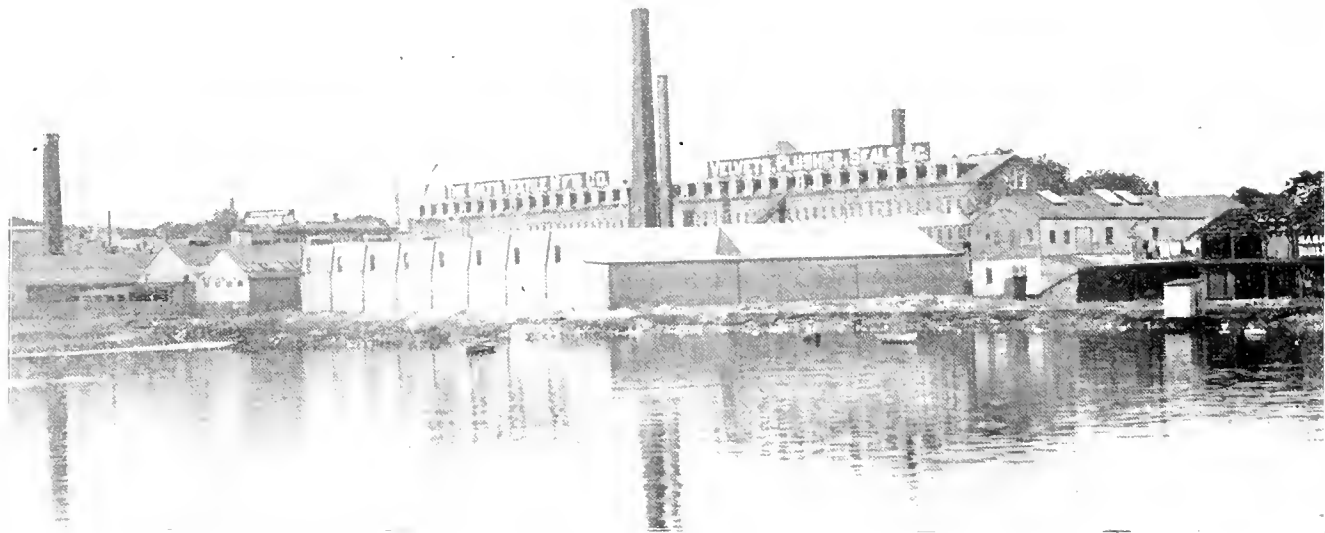
BIRDSEY, SOMERS & CO.'S FACTORY.



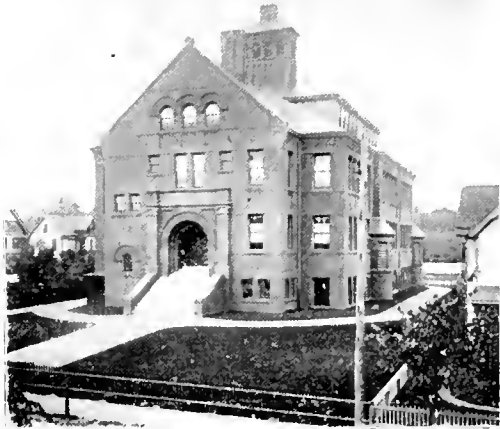
COURT HOUSE.



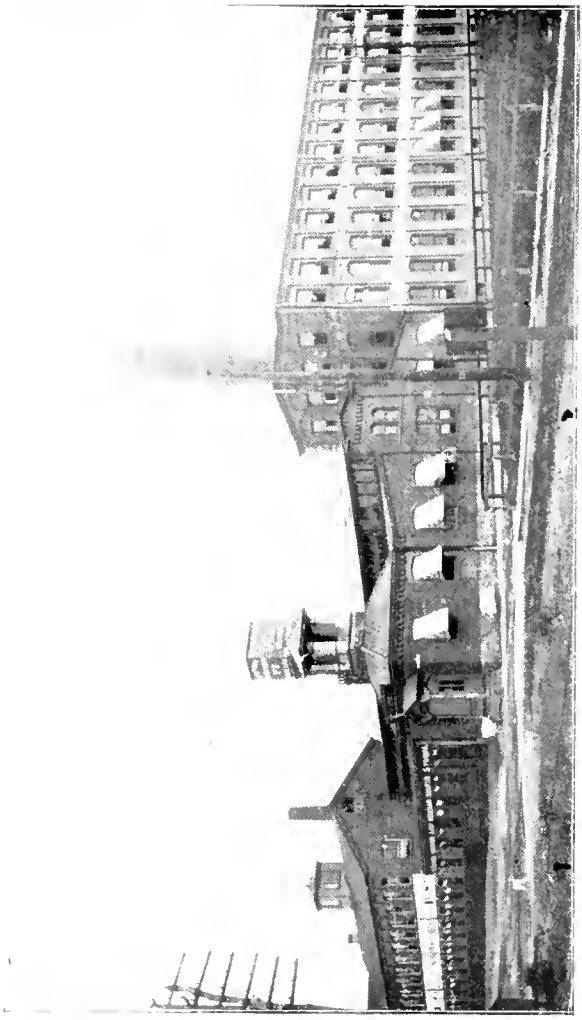
COUNTY JAIL.



SALTS TEXTILE MFG. CO.'S WORKS.



PUBLIC SCHOOLS.



THE HOLMES & EDWARDS SILVER CO.'S WORKS.



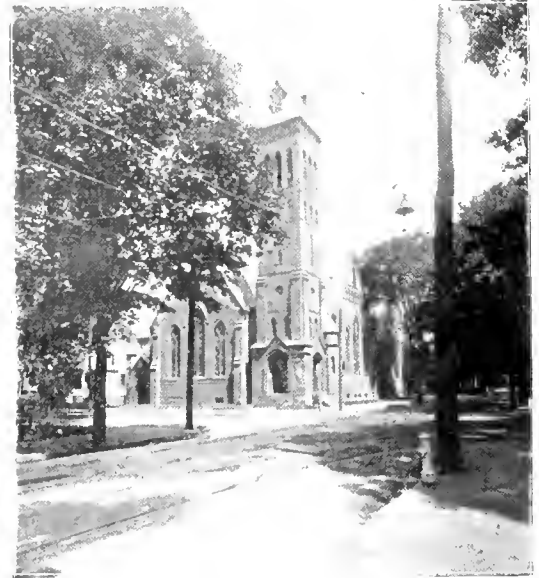
WARNER BROS. CORSET WORKS.



ST. JOHN'S EPISCOPAL CHURCH.



BAPTIST CHURCH.



WASHINGTON PARK M. E. CHURCH.



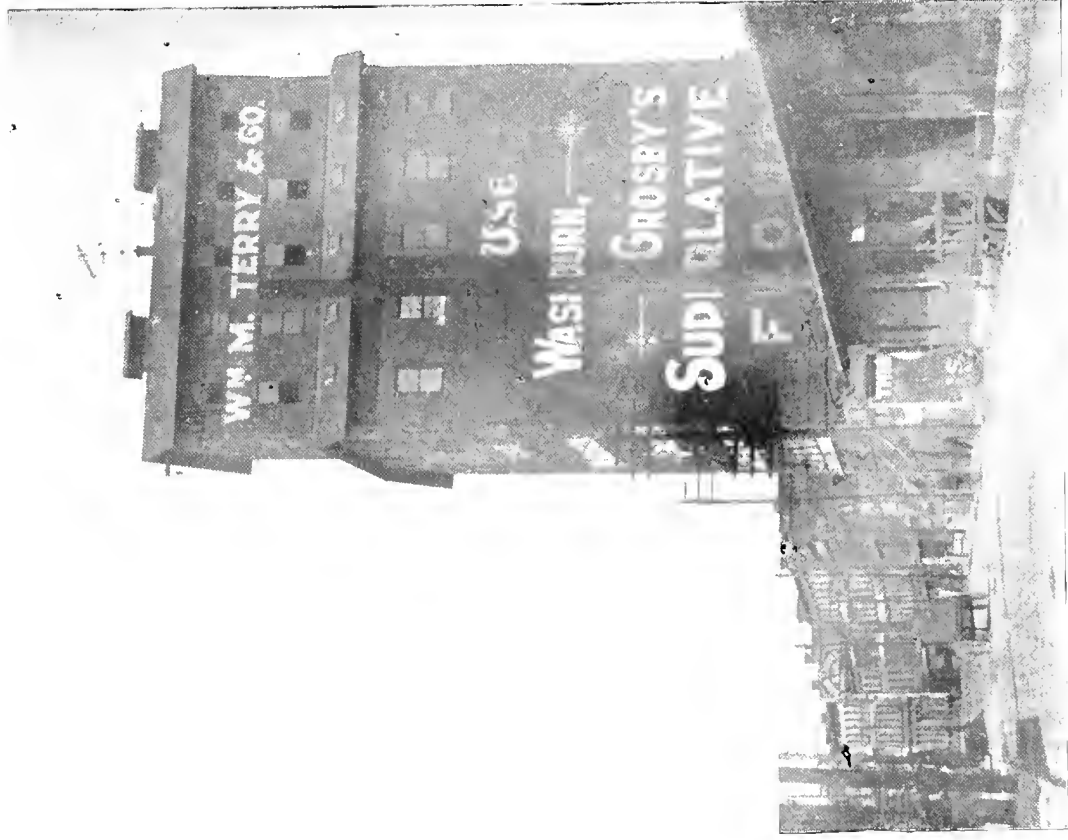
CITIZENS' GAS CO.'S WORKS.



FIRST PRESBYTERIAN CHURCH.



OLIVET CONGREGATIONAL CHURCH.



ELEVATOR.



H. F. GREENMAN'S RESIDENCE.



STEPHEN C. OSBORNE'S RESIDENCE.



M. MOODY DOWNER, Commissioner.



DANIEL M. ROWLAND, Bldg. Inspector.



FRANK MILLER, President Algonquin Club.



JOHN P. PINKERMAN, Assessor.



WALTER STAPLETON, Ex-Fire Commissioner



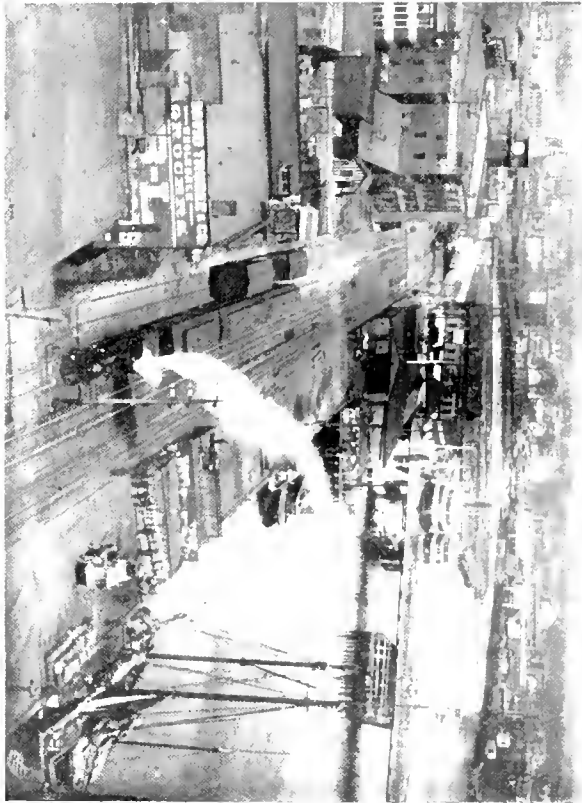
BRIDGEPORT NATIONAL BANK, United Bank Building.



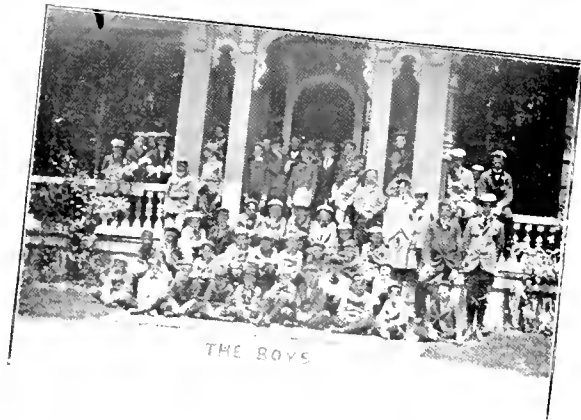
FIRST NATIONAL BANK.



INTERIOR VIEWS OF ALGONQUIN CLUB.



TWO HARBOR VIEWS.



PECK'S UNIVERSITY SCHOOL.



SEASIDE CLUB.

MEMBERS OF THE BOARD OF ALDERMEN.

(PHOTOS BY PLATI & JAHN.)



W. M. THOMAS, Pres't.



W. A. LEWIS.



C. A. SEELEY.



DR. C. L. BANKS.



COMMISSIONER C. B. BAKER.



N. J. PHELAN.



GEO. R. OSBORNE.



A. MORRISSEY.



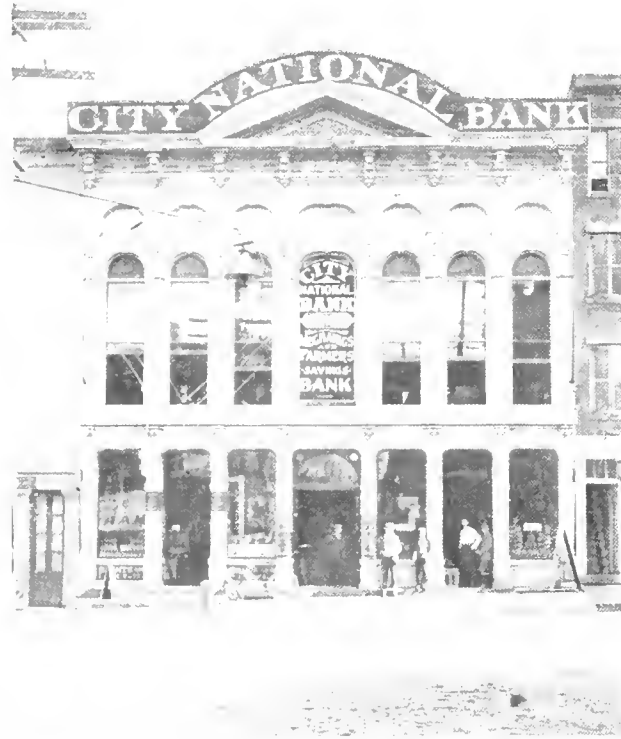
GEO. IRVING.



COM. GEO. M. BALDWIN.



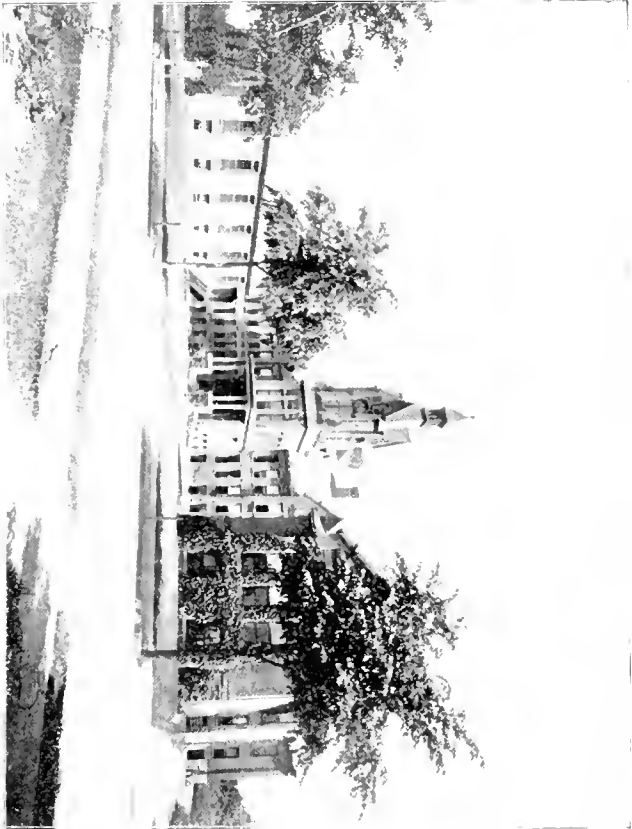
CONNECTICUT NATIONAL BANK.



CITY NATIONAL BANK.



FAIRFIELD COUNTY BAR



GENERAL HOSPITAL



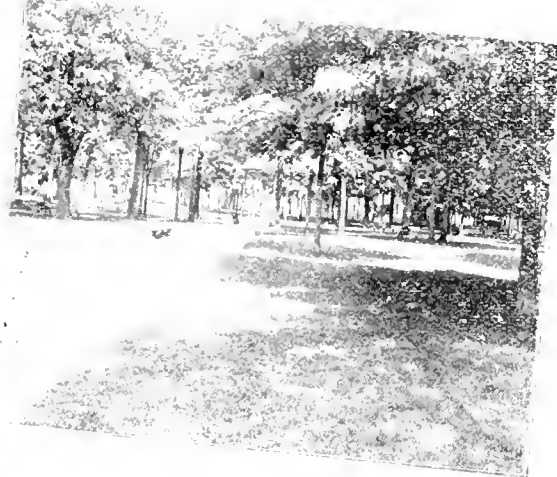
STERLING WIDOWS HOME



HON. THOS. P. TAYLOR'S RESIDENCE.



HON. Z. GOODSSELL'S RESIDENCE.

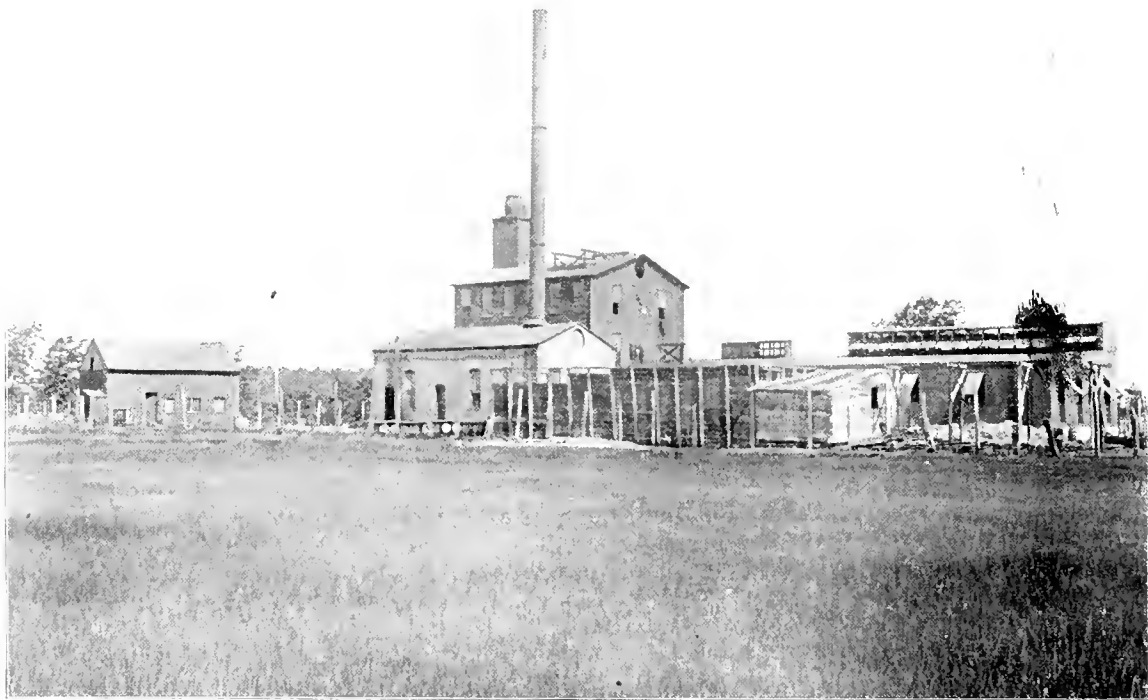


PARK VIEWS.

SEASIDE.

BEARDSLEY.

WASHINGTON.



CONNECTICUT REDUCTION CO.'S WORKS.



SEASIDE OUTING CLUB.



GROUP OF MEMBERS.



FRANK W. BEERS, Ex-Commissioner.



COL. W. H. STEVENSON.



HON. D. N. MORGAN, Ex. U. S. Treasurer.



STEPHEN C. OSBORNE, Ex-Assessor.



FRED. ENOS.



ST. AUGUSTINE'S R. C. CHURCH.



SACRED HEART PAROCHIAL SCHOOL.



ST. MARY'S R. C. CHURCH.



PLUMB & WINTON.

EMERGENCY HOSPITAL.



HON. ZALMON GOODSSELL.



EX-MAYOR FRANK E. CLARK.



GEO. E. HILL, CO. HEALTH OFFICER.



JUDGE P. KANE.



LATE JUDGE JOS. J. ROSE.



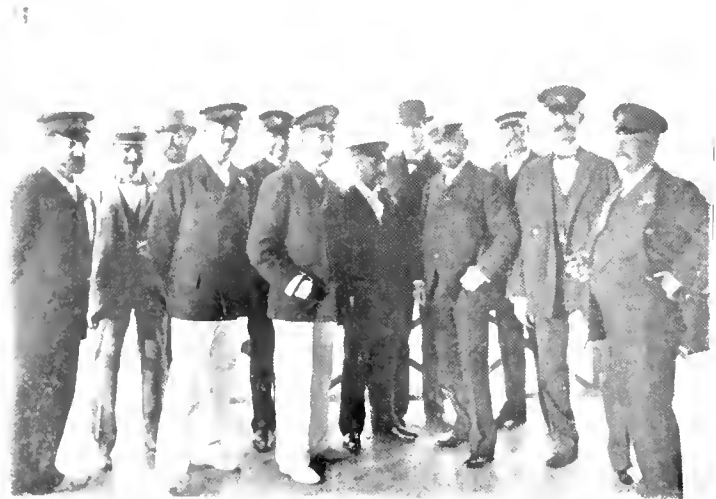
SMITH, MURRAY & Co., DRY GOODS.



INTERIOR OF CLOAK ROOM.



BRIDGEPORT YACHT CLUB.



GROUP OF MEMBERS.

❖ ❖ DIRECTORY. ❖ ❖

.....

JAMES STAPLES & CO., BANKERS, SAFE DEPOSIT VAULTS, REAL ESTATE AND INSURANCE.

BRIDGEPORT BRASS CO., MANUFACTURERS BRASS TUBING, WIRE, LAMPS, ETC. BRANCH OFFICES, NEW YORK, BOSTON AND PHILADELPHIA.

AMERICAN ORDNANCE CO., MANUFACTURERS GUNS, TORPEDOES AND AMMUNITION.

UNION METALLIC CARTRIDGE CO., MANUFACTURERS OF AMMUNITION.

EATON, COLE & BURNHAM MFG CO., MANUFACTURERS BRASS AND IRON, STEAM, WATER AND GAS FITTINGS. BRANCH OFFICE NEW YORK.

PACIFIC IRON WORKS, MANUFACTURERS STEAM ENGINES AND BOILERS, HOISTING AND MINING MACHINERY.

THOS. P. TAYLOR, MANUFACTURER OF DRESS STAYS AND NOTIONS FOR WOMEN'S WEAR.

SALTS TEXTILE CO., MANUFACTURERS OF SILK PUSHES, SEALS AND VELVETS.

BIRDSEYE, SOMERS & CO., CORSET MANUFACTURERS.

CONNECTICUT REDUCTION CO., IMPROVED SANITARY METHOD OF RENDERING AND DRYING OF GARBAGE, OFFAL, REFUSE, BREWERS' GRAIN, ETC., HOLTHAUS MACHINERY.

THE HOLMES & EDWARDS SILVER CO., MANUFACTURERS OF SILVERWARE.

CITIZENS' GAS CO., SUPPLYING GAS FOR FUEL AND POWER.

WARNER BROS., MANUFACTURERS OF CORSETS, OFFICES NEW YORK, CHICAGO, PARIS AND BERLIN.

❖ ❖ BANKS. ❖ ❖

.....

BRIDGEPORT NATIONAL BANK,	CAPITAL	\$ 215,850,	SURPLUS	\$ 112,000.
CITY NATIONAL BANK,	"	250,000,	"	215,000.
CONNECTICUT NATIONAL BANK,	"	332,100,	"	150,000.
FIRST NATIONAL BANK,	"	210,000,	"	105,000.



University of
Connecticut
Libraries

